



Straight Shanks

Shrink Fit ToolholdersH4–H5
Single-Angle Collet ChucksH6–H11
Double-Angle Collet ChucksH12–H22
Screw-On Adapters for Modular Milling CuttersH23–H25
Weldon Shank ToolsH26
Slotting Cutter AdaptersH27



Shank Tooling System • **Straight Shank Tools**

Straight Shank Toolholders are ideal for extending tool length to reach difficult-to-machine areas. These toolholders are intended for use in combination with other toolholder and adapter systems. When the toolholder assembly is properly balanced and application conditions are appropriate, Straight Shank Toolholders can effectively operate at speeds up to 8,000 RPM.



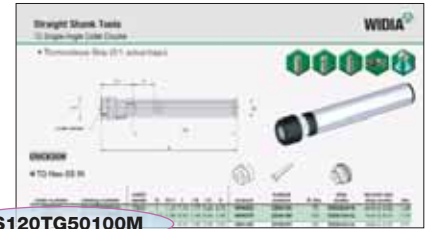
Straight Shank

- All non-critical surfaces are black oxide.
- Design enables coolant as a standard feature on most designs.
- Clean components prior to assembly.
- To avoid destroying the toolholder, never overtighten toolholders or neglect surface damage.



How Do Catalog Numbers Work?

Each character in our catalog number signifies a specific trait of that product. Use the following key columns and corresponding images to easily identify which attributes apply.



ERICKSON

SS120TG50100M

SS

Shank Style

120

Shank Taper Size

TG

Toolholder Style

50

Toolholder Size

100

Tool Length

M

Identification Value

- 120 = 12mm
- 125 = 12,5mm
- 160 = 16mm
- 190 = 19mm
- 200 = 20mm
- 250 = 25mm
- 038 = 3/8"
- 050 = 1/2"
- 062 = 5/8"
- 075 = 3/4"
- 100 = 1"
- 125 = 1-1/4"
- 150 = 1-1/2"
- 175 = 1-3/4"
- 200 = 2"

- DA** = Double-angle collet chuck
- DP** = Double pin, floating holder
- ER** = DIN 6499 single-angle collet chuck
- FC** = Fully floating holder
- SA** = Slotting cutter adapter
- STL** = DAL — tapping adapter, solid
- TCJ** = DAJ — tapping adapter, tension and compression
- TCK** = DAK — tapping adapter, tension and compression
- TCL** = DAL — tapping adapter, tension and compression
- TCTG** = TG — tapping adapter, tension and compression
- TG** = Tremendous Grip single-angle collet chuck
- TOJ** = DAJ — tapping adapter, tension only
- TOK** = DAK — tapping adapter, tension only
- TOL** = DAL — tapping adapter, tension only
- TT** = Shrink Fit thermo toolholder

(Flange face to front of tool)

metric
xxx = xxx

inch
xxx = x.xx

M = Tool built to metric values
(blank) = Tool built to inch values

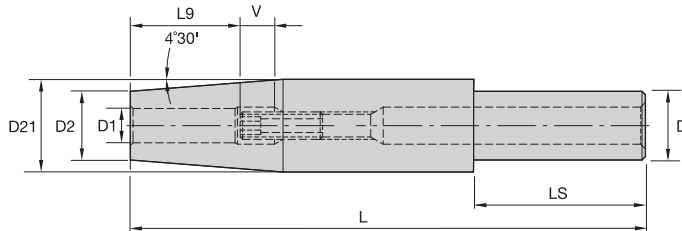
- TG** = Collet series xx (50), xxx (100)
- EM** = I.D. size: metric — xx = xx, (20);
inch — xxx = x.xx, (075)
- SM** = O.D. size: metric — xx = xx, (20);
inch — xxx = x.xx, (075)

Straight Shank Tools

Shrink Fit Toolholders General Purpose (GP)



- Suitable for carbide and HSS cutting tools (requirements below).
- Slim design for extending adapters, collet chucks, and toolholders.
- 10mm (3/8") axial adjustment.



Cutting Tool Shank Requirements
metric (ISO standard)

cutting tool shank diameter	tolerance	
3	h4	0,000/-0,003
4	h4	0,000/-0,004
5	h5	0,000/-0,005
6	h6	0,000/-0,008
8 & 10	h6	0,000/-0,009
12	h6	0,000/-0,011

Straight Shank Tools

ERICKSON™

■ TT GP MM-SS MM



order number	catalog number	D	D1	D2	D21	L	LS	L9	V	stop screw	wrench size stop screw	kg
2264458	SS160TT03110M	16	3	9	15	110	50	15	10	TTSS05014M	2,5mm	0,11
2456194	SS160TT04110M	16	4	9	15	110	50	15	10	TTSS05014M	2,5mm	0,12
1801299	SS200TT04150M	20	4	9	15	150	60	15	10	TTSS05014M	2,5mm	0,22
1801300	SS200TT05150M	20	5	9	15	150	60	15	10	TTSS06014M	3mm	0,22
1801301	SS200TT06150M	20	6	15	—	150	118	26	10	TTSS05014M	2,5mm	0,30
1801302	SS200TT08150M	20	8	15	—	150	118	26	10	TTSS06014M	3mm	0,30
1801413	SS200TT10150M	20	10	20	27	150	50	31	10	TTSS08014M	4mm	0,46
1801414	SS200TT12150M	20	12	20	27	150	50	36	10	TTSS10014M	5mm	0,44

(continued)

(TT GP continued)

Cutting Tool Shank Requirements
inch (industry standard)

cutting tool shank diameters	tolerance
1/8 & 3/16	-.0001/- .0003
1/4, 5/16, & 3/8	-.0001/- .0004
7/16, 1/2, 9/16, & 5/8	.0000/- .0004

■ TT GP IN-SS IN



order number	catalog number	D	D1	D2	D21	L	LS	L9	V	stop screw	wrench size stop screw	lbs
1794109	SS050TT012600	1/2	1/8	.35	.50	6.00	5.07	.61	.39	TTSS05014M	2,5mm	.26
1794110	SS050TT018600	1/2	3/16	.35	.50	6.00	5.07	.61	.39	TTSS06014M	3mm	.25
1794111	SS075TT025600	3/4	1/4	.59	.75	6.00	4.98	1.02	.39	TTSS05014M	2,5mm	.62
1794112	SS075TT031600	3/4	5/16	.59	.75	6.00	4.98	1.02	.39	TTSS06014M	3mm	.61
1794233	SS075TT038600	3/4	3/8	.79	1.06	6.00	1.50	1.22	.39	TTSS08014M	4mm	1.07
1794234	SS075TT044600	3/4	—	.79	1.06	6.00	1.50	1.42	.39	TTSS10014M	4mm	1.05
1794235	SS075TT050600	3/4	1/2	.79	1.06	6.00	1.50	1.42	.39	TTSS10014M	5mm	1.02
1794236	SS100TT056700	1	9/16	.95	1.26	7.00	1.75	1.42	.39	TTSS10014M	4mm	1.72
1794237	SS100TT062700	1	5/8	.95	1.26	7.00	1.75	1.54	.39	TTSS12014M	6mm	1.68

Straight shank toolholders are a great complement to the Shrink Fit program. Use caution to not overheat the Slim Line design. Overheating can cause warping or permanent damage. The life cycle of the toolholders will be drastically reduced if the activating heat is not controlled. The Slim Line design permits only a limited number of heat shrinks. Testing has shown more than 300 heat shrinks can be performed with the straight shank extensions when the activation heat is controlled to less than 426 °C (800 °F).

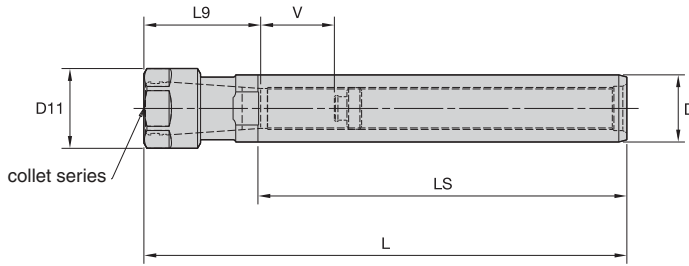
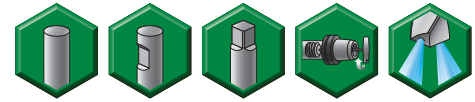
NOTE: Do not overheat. Overheating will destroy the accuracy and functionality of the toolholder.
 Shrink Fit technical section, see page K56.
 Supplied with stop screw.
 Adjusting stop screw gage, see page K59.
 Shrink Fit accessories, see page J2.

Straight Shank Tools

TG Single-Angle Collet Chucks



- Tremendous Grip (3:1 advantage).



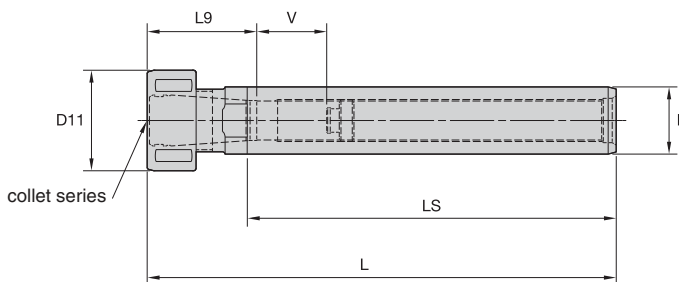
TG collet series	Collet Capacity			
	mm		inch	
	min	max	min	max
TG50	1,1	13,5	1/32	17/32
TG75	2,6	20,0	3/64	3/4
TG100	2,6	25,5	5/64	1

ERICKSON™

■ TG Hex-SS IN



order number	catalog number	collet series	D	D11	L	L9	LS	V	locknut	wrench	ft. lbs.	stop screw	wrench size	stop screw	lbs
1082537	SS100TG050719	TG50	1	1.19	7.19	1.77	5.49	4.73	NPA050	OEW106	75	SS062041G	4mm & 5/32		1.03
1025794	SS125TG075850	TG75	1 1/4	2.09	8.50	2.06	6.00	3.56	NPA075	OEW188	100	SS081041G	4mm & 5/32		2.28
2636807	SS125TG100925	TG100	1 1/4	2.44	9.25	2.88	6.00	3.63	NPA100	OEW225	150	SS081041G	4mm & 5/32		3.27
1025797	SS150TG075775	TG75	1 1/2	2.09	7.75	2.06	6.00	5.00	NPA075	OEW188	100	SS081041G	4mm & 5/32		2.97
1025638	SS150TG100925	TG100	1 1/2	2.44	9.25	2.63	6.00	5.93	NPA100	OEW225	150	SS112041G	4mm & 5/32		3.52
1025796	SS175TG100819	TG100	1 3/4	2.44	8.19	2.63	6.02	4.87	NPA100	OEW225	150	SS112041G	4mm & 5/32		4.15
1025795	SS200TG100819	TG100	2	2.44	8.19	2.76	6.00	4.74	NPA100	OEW225	150	SS112041G	4mm & 5/32		5.38



■ TG Round-SS IN



order number	catalog number	collet series	D	D11	L	L2	L9	V	locknut	wrench	ft. lbs.	stop screw	wrench size	stop screw	lbs
1025637	SS100TG050698G	TG50	1	1.50	6.98	1.49	1.77	4.53	LNA050M	HSW34M	50	SS062041G	4mm & 5/32		1.15

NOTE: Collet must be loaded into locknut first. Before loading into the chuck body, insert the cutting tool, then tighten to the recommended tightening torque.

Collet chuck technical section, see page K74.
Supplied with locknut and stop screw.

Locknut wrench must be ordered separately.

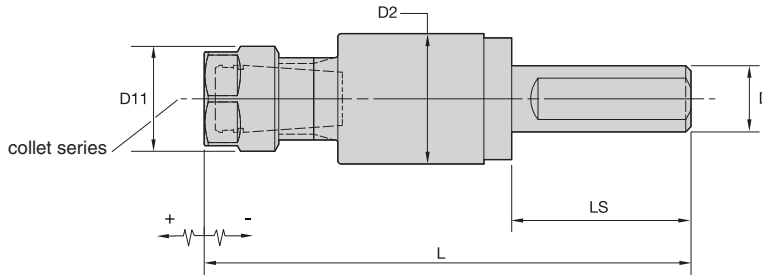
Interchangeable locknuts, coolant-style locknuts, and coolant disks are available and must be ordered separately; see page J6.

Stop screw coolant caps are available and must be ordered separately; see page J22.

TG standard straight-bore collets, see page I10.

TG tap collets, see page I10.

- Tremendous Grip (3:1 advantage).
- Anti-friction drive.
- Compact design.
- Adjustment hard start.



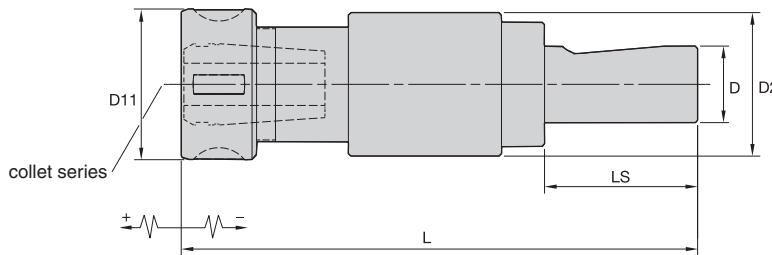
TG collet series	Collet Capacity			
	mm		inch	
	min	max	min	max
TG50	1,1	13,5	1/32	17/32
TG75	2,6	20,0	3/64	3/4
TG100	2,6	25,5	5/64	1

ERICKSON

■ TG Hex Tap T&C-SS IN



order number	catalog number	collet series	D	D11	D2	L	LS	tension	compression	hex assembly	OEW	ft. lbs.	lbs
1288221	SS075TCTG050	TG50	3/4	1.22	1.48	5.48	2.00	.25	.30	NPA050	OEW106	75	.68



■ TG Round Tap T&C-SS IN



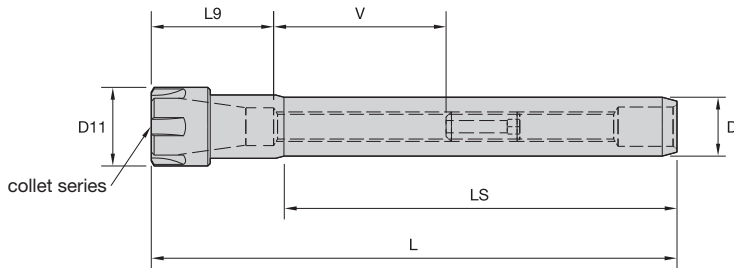
order number	catalog number	collet series	D	D11	D2	L	LS	tension	compression	locknut	wrench	ft. lbs.	lbs
1288256	SS100TCTG075	TG75	1	1.97	1.88	6.79	2.20	.40	.43	LNA075M	HSW45M	100	1.50
1017625	SS150TCTG100756	TG100	1 1/2	2.36	2.50	7.56	2.68	.50	.13	LNA100M	HSW58M	150	2.12

NOTE: Collet must be loaded into locknut first. Before loading into the chuck body, insert the cutting tool, then tighten to the recommended tightening torque.
 Collet chuck technical section, see page K74.
 Supplied with locknut.
 Locknut wrench must be ordered separately.
 Interchangeable locknuts, coolant-style locknuts, and coolant disks are available and must be ordered separately; see page J6.
 TG standard straight-bore collets, see page I10.
 TG tap collets, see page I10.

Straight Shank Tools

ER Single-Angle Collet Chucks

- Grip (2:1 advantage).



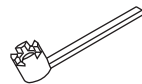
ERICKSON™

ER Slim-SS MM

ER collet series	Collet Capacity			
	mm		inch	
	min	max	min	max
ER11	0,5	7,0	.02	.28
ER16	0,5	10,0	.02	.41
ER20	0,5	13,0	.02	.50
ER25	1,0	16,0	.04	.63
ER32	1,0	20,0	.04	.79

order number	catalog number	collet series	D	D11	L	LS	L9	V	kg
1288261	SS120ER11107M	ER11	12	16	107	80	24	56	0,08
1288285	SS160ER11132M	ER11	16	16	132	100	24	56	0,16
1125015	SS200ER16182M	ER16	20	22	182	140	32	68	0,32
1288321	SS250ER20190M	ER20	25	28	190	150	36	64	0,55

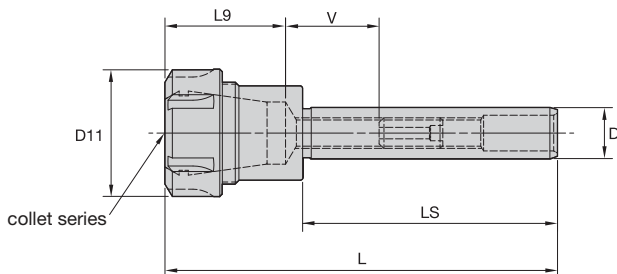
Spare Parts



catalog number	locknut	locknut wrench	counterbore collet torque (Nm)	straight collet torque (Nm)	stop screw	wrench size stop screw
SS120ER11107M	LER11M	ER11WEM	12	16	CSS0615M	3mm
SS200ER16182M	LER16M	ER16WEM	24	24	CSS1020M	5mm
SS250ER20190M	LER20M	ER20WEM	28	28	CSS1225M	6mm

(continued)

(ER continued)



■ ER Round-SS MM

order number	catalog number	collet series	D	D11	L	LS	L9	V	kg
1288303	SS200ER25146M	ER25	20	42	146	100	42	58	0,38
1288304	SS200ER32154M	ER32	20	50	154	100	49	51	0,51

■ Spare Parts



catalog number	locknut	locknut wrench	Nm	stop screw	wrench size stop screw
SS200ER25146M	LNSER25M	ER25WM	104	CSS1225M	6mm
SS200ER32154M	LNSER32M	ER32WM	136	CSS1225M	6mm

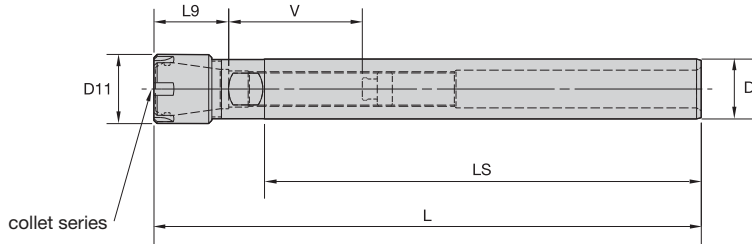
NOTE: Collet must be loaded into locknut first. Before loading into the chuck body, insert the cutting tool, then tighten to the recommended tightening torque.
Collet chuck technical section, see page K74.
Supplied with locknut and stop screw.
Locknut wrench must be ordered separately.
ER standard straight-bore collets, see page 150.
ER tap collets, see page 158.
ER TCT tension-only tap collets, see page 160.

Straight Shank Tools

ER Single-Angle Collet Chucks



- Grip (2:1 advantage).



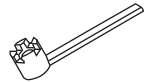
ER collet series	Collet Capacity			
	mm		inch	
	min	max	min	max
ER8	0,5	0,5	.02	.20
ER11	0,5	7,0	.02	.28
ER16	0,5	10,0	.02	.41
ER20	0,5	13,0	.02	.50
ER25	1,0	16,0	.04	.63

ERICKSON™

■ ER Slim-SS IN

order number	catalog number	collet series	D	D11	L	LS	L9	V	lbs
1021460	SS038ER08500	ER8	3/8	.47	5.00	4.15	.71	1.42	.10
1021462	SS050ER11700	ER11	1/2	.63	7.00	5.96	.95	3.23	.26
1021494	SS075ER16700	ER16	3/4	.87	7.00	5.47	1.30	2.24	.56

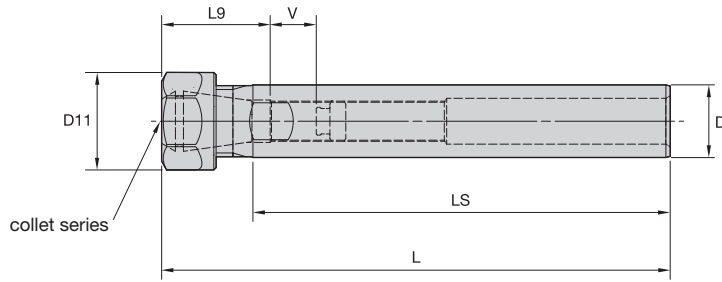
■ Spare Parts



catalog number	locknut	wrench	Nm	stop screw	wrench size stop screw
SS038ER08500	LER08M	ER08WEM	4.8	SS025031PKG	—
SS050ER11700	LER11M	ER11WEM	12.0	SS031031G	2mm & 5/64
SS075ER16700	LER16M	ER16WEM	24.0	SS044038G	4mm & 5/32

(continued)

(ER continued)



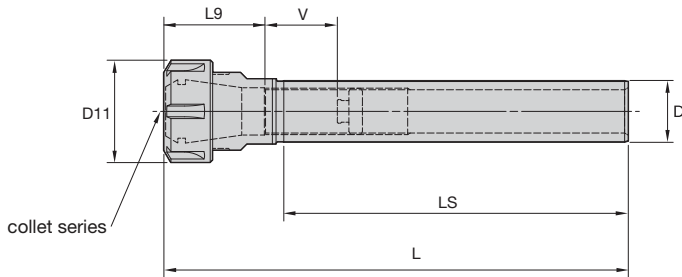
■ ER Hex-SS IN

order number	catalog number	collet series	D	D11	L	LS	L9	V	lbs
1021496	SS100ER20700	ER20	1.00	1.34	7.00	5.70	1.30	2.20	1.07

■ Spare Parts



catalog number	locknut	wrench	counterbore collet torque (ft. lbs.)	straight collet torque (ft. lbs.)	stop screw	wrench size stop screw
SS100ER20700	LNHSER20M	OEW30M	24	59	SS056041G	4mm & 5/32



■ ER Round-SS IN

order number	catalog number	collet series	D	D11	L	LS	L9	V	lbs
1021498	SS100ER25750	ER25	1.00	1.65	7.50	5.69	1.58	1.97	1.13

■ Spare Parts



catalog number	locknut	wrench	ft. lbs.	stop screw	wrench size stop screw
SS100ER25750	LNSER25M	ER25WM	77	SS075041G	4mm & 5/32

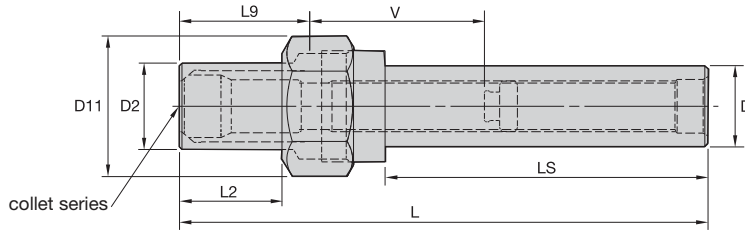
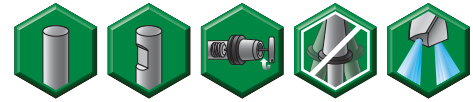
NOTE: Collet must be loaded into locknut first. Before loading into the chuck body, insert the cutting tool, then tighten to the recommended tightening torque.
Collet chuck technical section, see page K74.
Supplied with locknut and stop screw.
Locknut wrench must be ordered separately.
ER standard straight-bore collets, see page I50.
ER tap collets, see page I58.
ER TCT tension-only tap collets, see page I60.

Straight Shank Tools

DA 01 Series Double-Angle Collet Chucks



- Grip 1:1.



ERICKSON

■ DA 01-SS IN

DA collet series	Collet Capacity			
	mm		inch	
	min	max	min	max
DA300	0,2	6	1/64	1/4
DA200	0,2	10	1/64	25/64
DA100	1,8	14	1/64	9/16
DA180	2,2	20	1/64	3/4


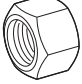


Straight Shank Tools

order number	catalog number	collet series	D	D2	D11	L	L2	LS	L9	V	lbs
1015309	SS050DA301544	DA300	1/2	.50	.87	5.44	.62	3.98	1.25	2.9370	.23
1015312	SS062DA301319	DA300	5/8	.50	.87	3.19	.62	1.73	1.21	1.4800	.21
1015313	SS062DA301544	DA300	5/8	.50	.87	5.44	.62	3.98	1.25	2.9410	.36
1015736	SS062DA201325	DA200	5/8	.81	1.44	3.25	.91	1.26	1.30	1.4600	.45
1015522	SS062DA201600	DA200	5/8	.81	1.44	6.00	.91	4.01	1.42	2.7559	.60
1015483	SS075DA301344	DA300	3/4	.50	.86	3.44	.61	—	1.22	1.7300	.30
1015695	SS075DA301544	DA300	3/4	.50	.86	5.44	—	3.96	1.26	3.5400	.51
1015669	SS075DA201600	DA200	3/4	.81	1.44	6.00	.91	4.01	1.11	3.0120	.71
1015601	SS075DA101650	DA100	3/4	1.06	1.73	6.50	—	3.96	1.57	4.1800	.98
1015666	SS100DA301544	DA300	1	.50	.86	5.44	.62	3.96	1.22	3.0300	.89
1015340	SS100DA201600	DA200	1	.81	1.44	6.00	.88	4.01	1.50	2.5980	1.10
1015520	SS100DA101650	DA100	1	1.06	1.73	6.50	1.26	3.96	1.69	4.0200	1.24
1015625	SS100DA181638	DA180	1	1.32	2.02	6.38	—	3.96	1.69	4.0160	1.33
1015375	SS125DA181838	DA180	1 1/4	1.32	2.02	8.38	2.42	5.96	1.73	3.9800	2.12
1015378	SS150DA201600	DA200	1 1/2	.81	1.44	6.00	—	4.01	1.50	2.6300	2.21
1015597	SS150DA181838	DA180	1 1/2	1.32	2.02	8.38	—	5.96	1.50	4.2100	3.03
1015764	SS200DA201800	DA200	2	.81	1.44	8.00	.91	6.01	1.50	2.6378	5.45
1015765	SS200DA101850	DA100	2	1.06	1.73	8.50	1.26	5.97	1.70	4.0160	5.46
1015631	SS200DA181838	DA180	2	1.32	2.02	8.38	.99	5.98	1.88	5.9060	5.41

(continued)

(DA 01-SS IN continued)

■ Spare Parts

catalog number	 nose piece	 hex locknut	 locknut wrench	ft. lbs.	 stop screw	wrench size stop screw
SS050DA301544	NP301	LN301	OEW075	20	SS031031G	2mm & 5/64
SS062DA301319	NP301	LN301	OEW075	20	SS031031G	2mm & 5/64
SS062DA301544	NP301	LN301	OEW075	20	SS031031G	2mm & 5/64
SS062DA201325	NP201	LN201	OEW125	40	SS038031G	2mm & 5/64
SS062DA201600	NP201	LN201	OEW125	40	SS038031G	2mm & 5/64
SS075DA301344	NP301	LN301	OEW075	20	SS031031G	2mm & 5/64
SS075DA301544	NP301	LN301	OEW075	20	SS031031G	2mm & 5/64
SS075DA201600	NP201	LN201	OEW125	40	SS044038G	4mm & 5/32
SS075DA101650	NP101	LN101	OEW150	45	SS050038G	4mm & 5/32
SS100DA301544	NP301	LN301	OEW075	20	SS031031G	2mm & 5/64
SS100DA201600	NP201	LN201	OEW125	40	SS044038G	4mm & 5/32
SS100DA101650	NP101	LN101	OEW150	45	SS062041G	4mm & 5/32
SS100DA181638	NP181	LN181	OEW175	75	SS075041G	4mm & 5/32
SS125DA181838	NP181	LN181	OEW150	75	SS081041G	4mm & 5/32
SS150DA201600	NP201	LN201	OEW125	40	SS044038G	4mm & 5/32
SS150DA181838	NP181	LN181	OEW175	75	SS081041G	4mm & 5/32
SS200DA201800	NP201	LN201	OEW125	40	SS044038G	4mm & 5/32
SS200DA101850	NP101	LN101	OEW150	45	SS062041G	4mm & 5/32
SS200DA181838	NP181	LN181	OEW175	75	SS081041G	4mm & 5/32

NOTE: Tighten locknut to the recommended tightening torque.
 Collet chuck technical section, see page K74.
 Supplied with locknut and stop screw.
 Locknut wrench must be ordered separately.
 Stop screw coolant caps are available and must be ordered separately; see page J22.
 DA standard straight-bore collets, see page I63.
 DA non-pullout collets, see page I65.

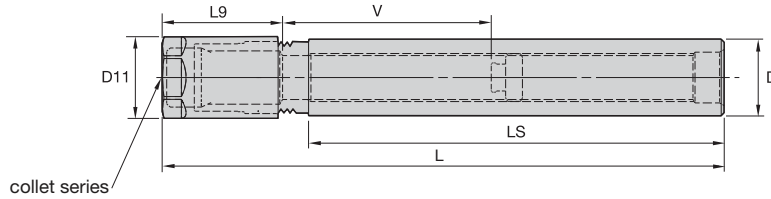
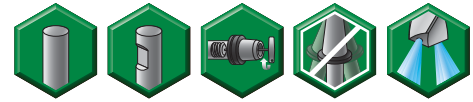
Straight Shank Tools

Straight Shank Tools

DA 04 Series Double-Angle Collet Chucks



- Grip 1:1.
- Small outside diameter clearance is ideal for machining centers, close center-distance, and fixture problems.



ERICKSON™

■ DA 04-SS MM

DA collet series	Collet Capacity			
	mm		inch	
	min	max	min	max
DA000	0,65	4	—	—
DA300	0,2	6	1/64	1/4
DA200	0,2	10	1/64	25/64
DA100	1,8	14	1/64	9/16
DA180	2,2	20	1/64	3/4

Straight Shank Tools

order number	catalog number	collet series	D	D11	L	LS	L9	V	kg
1015043	SS080DA000132M	DA000	8,0	10,1	132	100	—	—	0,05
1015037	SS125DA304109M	DA300	12,5	14,2	109	72	33	63	0,07
1015038	SS125DA304173M	DA300	12,5	14,2	173	136	34	126	0,11
1015034	SS190DA204117M	DA200	19,1	21,5	117	74	37	65	0,19
1015013	SS190DA204181M	DA200	19,1	21,5	181	138	42	124	0,29
1015035	SS200DA204117M	DA200	20,0	21,5	117	74	38	65	0,21
1015036	SS200DA204181M	DA200	20,0	21,5	181	138	37	128	0,32
1015011	SS250DA104122M	DA100	25,0	27,0	122	73	46	61	0,29
1015012	SS250DA104186M	DA100	25,0	27,0	186	137	46	124	0,45

■ Spare Parts



catalog number	locknut	locknut wrench	Nm	stop screw	wrench size stop screw
SS080DA000132M	LN000M	OEW9M	41	—	—
SS125DA304109M	LNA304M	OEW13M	27	SS031031G	2mm & 5/64
SS125DA304173M	LNA304M	OEW13M	27	SS031031G	2mm & 5/64
SS190DA204117M	LNA204M	OEW19M	54	SS044038G	4mm & 5/32
SS190DA204181M	LNA204M	OEW19M	54	SS044038G	4mm & 5/32
SS200DA204117M	LNA204M	OEW19M	54	SS044038G	4mm & 5/32
SS200DA204181M	LNA204M	OEW19M	54	SS044038G	4mm & 5/32
SS250DA104122M	LNA104M	OEW24M	61	SS062041G	4mm & 5/32
SS250DA104186M	LNA104M	OEW24M	61	SS062041G	4mm & 5/32

(continued)

(DA 04-SS continued)

■ DA 04-SS IN

order number	catalog number	collet series	D	D11	L	LS	L9	V	lbs
1015308	SS050DA304438	DA300	1/2	.56	4.38	2.93	1.34	2.60	.17
1015311	SS050DA304681	DA300	1/2	.56	6.81	5.36	1.27	2.98	.24
1015334	SS075DA204469	DA200	3/4	.84	4.69	3.00	1.50	2.63	.42
1015337	SS075DA204712	DA200	3/4	.84	7.13	5.44	1.50	3.27	.62
1015338	SS100DA104488	DA100	1	1.06	4.88	2.95	1.69	2.56	.66
1015342	SS100DA104731	DA100	1	1.06	7.31	5.38	1.73	4.96	1.02
1015517	SS125DA184738	DA180	1 1/4	1.44	7.38	5.38	1.89	4.76	1.61
1015594	SS125DA184988	DA180	1 1/4	1.44	9.88	7.86	1.89	7.20	2.15
1015737	SS150DA404104	DA400	1 1/2	1.87	10.40	7.96	2.20	7.25	2.80
1015545	SS150DA404791	DA400	1 1/2	1.88	7.91	5.18	2.19	4.81	2.22

■ Spare Parts



catalog number	locknut	wrench	ft. lbs.	stop screw	wrench size stop screw
SS050DA304438	LNA304M	OEW050	20	SS031031G	2mm & 5/64
SS050DA304681	LNA304M	OEW050	20	SS031031G	2mm & 5/64
SS075DA204469	LNA204M	OEW075	40	SS044038G	4mm & 5/32
SS075DA204712	LNA204M	OEW075	40	SS044038G	4mm & 5/32
SS100DA104488	LNA104M	OEW094	45	SS062041G	4mm & 5/32
SS100DA104731	LNA104M	OEW094	45	SS062041G	4mm & 5/32
SS125DA184738	LNA184M	OEW119	60	SS081041G	4mm & 5/32
SS125DA184988	LNA184M	OEW119	60	SS081041G	4mm & 5/32
SS150DA404104	LNA404M	OEW168	64	SS112041G	4mm & 5/32
SS150DA404791	LNA404M	OEW168	64	SS112041G	4mm & 5/32

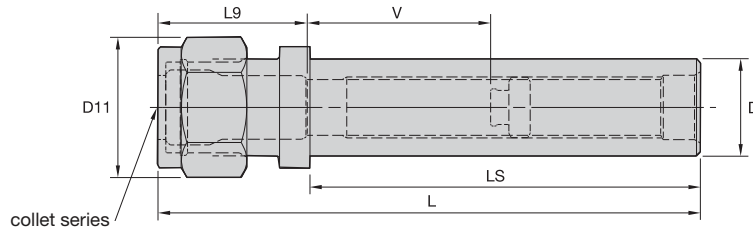
NOTE: Tighten locknut to the recommended tightening torque.
 Collet chuck technical section, see page K74.
 Supplied with locknut and stop screw.
 Locknut wrench must be ordered separately.
 Stop screw coolant caps are available and must be ordered separately; see page J22.
 DA standard straight-bore collets, see page I63.
 DA non-pullout collets, see page I65.

Straight Shank Tools

DA 08 Series Double-Angle Collet Chucks



- Grip 1:1.
- Heavy-duty design.



ERICKSON™

■ DA 08-SS-IN

DA collet series	Collet Capacity			
	mm		inch	
	min	max	min	max
DA300	0,2	6	1/64	1/4
DA200	0,2	10	1/64	25/64
DA100	1,8	14	1/64	9/16
DA180	2,2	20	1/64	3/4

Straight Shank Tools

order number	catalog number	collet series	D	D11	L	LS	L9	V	lbs
1015310	SS050DA308516	DA300	1/2	.79	5.16	3.98	1.34	2.91	.22
1015519	SS062DA308516	DA300	5/8	.77	5.16	3.98	1.38	2.80	.35
1015694	SS062DA208569	DA200	5/8	1.15	5.69	4.00	1.38	2.87	.44
1015336	SS075DA308516	DA300	3/4	.79	5.16	4.24	1.97	2.62	.50
1015335	SS075DA208531	DA200	3/4	1.15	5.31	3.96	1.45	2.68	.52
1015518	SS075DA108588	DA100	3/4	1.44	5.88	4.00	1.73	3.62	.67
1015696	SS100DA308516	DA300	1	.77	5.16	3.98	1.38	2.76	.88
1015734	SS100DA208431	DA200	1	1.15	4.31	2.96	1.50	2.24	.73
1015341	SS100DA208531	DA200	1	1.15	5.31	3.95	1.46	2.68	.91
1015698	SS100DA108556	DA100	1	1.44	5.56	3.99	1.75	3.21	.90
1015339	SS100DA188638	DA180	1	1.73	6.38	4.00	1.97	3.82	1.04
1015703	SS125DA208531	DA200	1-1/4	1.15	5.31	3.96	1.50	2.59	1.40
1015343	SS125DA108556	DA100	1-1/4	1.44	5.56	3.99	1.77	3.19	1.40
1015374	SS125DA108756	DA100	1-1/4	1.44	7.56	5.99	1.77	3.94	1.92
1015376	SS125DA188762	DA180	1-1/4	1.73	7.63	5.91	1.93	5.04	1.76
1015379	SS150DA208531	DA200	1-1/2	1.15	5.31	3.96	1.50	3.22	2.02
1015629	SS150DA208731	DA200	1-1/2	1.15	7.31	5.96	1.46	2.67	2.91
1015380	SS150DA108756	DA100	1-1/2	1.44	7.56	5.99	1.77	3.94	2.83
1015381	SS150DA188762	DA180	1-1/2	1.73	7.63	5.91	1.93	5.08	2.64
1015404	SS175DA188762	DA180	1-3/4	1.73	7.63	5.91	1.93	5.08	3.70
1015405	SS200DA188762	DA180	2	1.73	7.63	5.91	1.89	5.22	4.92

(continued)

(DA 08-SS IN continued)

■ Spare Parts



catalog number	locknut	wrench	ft. lbs.	stop screw	wrench size stop screw
SS050DA308516	LNA308M	OEW068	20	SS031031G	2mm & 5/64
SS062DA308516	LNA308M	OEW068	20	SS031031G	2mm & 5/64
SS062DA208569	NPA208	OEW100	40	SS038031G	2mm & 5/64
SS075DA308516	LNA308M	OEW068	20	SS031031G	2mm & 5/64
SS075DA208531	NPA208	OEW100	40	SS044038G	4mm & 5/32
SS075DA108588	LNA108M	OEW125	55	SS050038G	4mm & 5/32
SS100DA308516	LNA308M	OEW068	20	SS031031G	2mm & 5/64
SS100DA208431	NPA208	OEW100	40	SS044038G	4mm & 5/32
SS100DA208531	NPA208	OEW100	40	SS044038G	4mm & 5/32
SS100DA108556	LNA108M	OEW125	55	SS062041G	4mm & 5/32
SS100DA188638	NPA188	OEW150	75	SS075041G	4mm & 5/32
SS125DA208531	NPA208	OEW100	40	SS044038G	4mm & 5/32
SS125DA108556	LNA108M	OEW125	55	SS062041G	4mm & 5/32
SS125DA108756	LNA108M	OEW125	55	SS062041G	4mm & 5/32
SS125DA188762	NPA188	OEW150	75	SS081041G	4mm & 5/32
SS150DA208531	NPA208	OEW100	40	SS044038G	4mm & 5/32
SS150DA208731	NPA208	OEW100	40	SS044038G	4mm & 5/32
SS150DA108756	LNA108M	OEW125	55	SS062041G	4mm & 5/32
SS150DA188762	NPA188	OEW150	75	SS081041G	4mm & 5/32
SS175DA188762	NPA188	OEW150	75	SS081041G	4mm & 5/32
SS200DA188762	NPA188	OEW150	75	SS081041G	4mm & 5/32

NOTE: For retention tighten locknut to the recommended tightening torque.
 Collet chuck technical section, see page K74.
 Supplied with locknut and stop screw.
 Locknut wrench must be ordered separately.
 Stop screw coolant caps are available and must be ordered separately; see page J22.
 DA standard straight-bore collets, see page I63.
 DA non-pullout collets, see page I65.

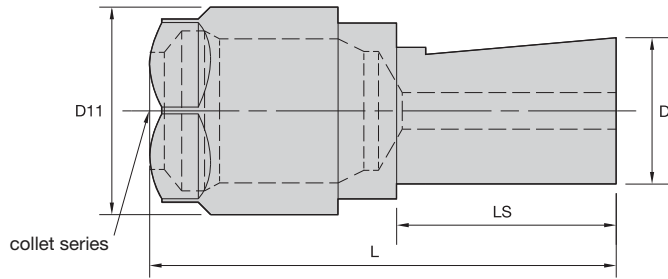
Straight Shank Tools

Straight Shank Tools

DA L Tap Series Solid Tapping, Double-Angle Collet Chucks



- Grip 1:1.
- Industry standard Erickson™ double-angle collet system.
- Small outside diameter clearance is ideal for machining centers, close center-distance, and fixture issues.
- Solid drive/positive drive collets prevent tap slippage.
- Right- or left-hand tapping capability.
- Economical to use.



DA L collet series	mm		Collet Capacity			
	min	max	inch			
L	M5	M24	#0	7/8	1/16P	1/2P

ERICKSON™

■ DA L Tap Solid-SS IN

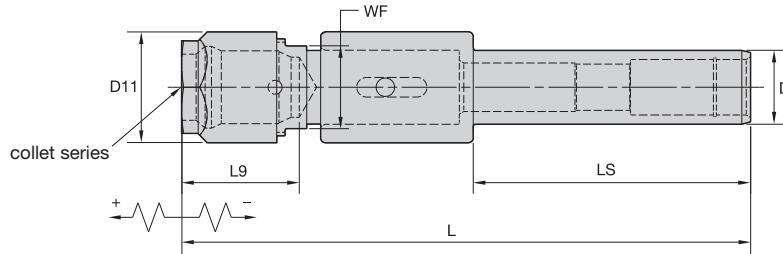
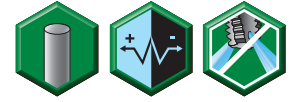


order number	catalog number	collet series	D	D11	L	LS	locknut	ft. lbs.	wrench	lbs
1017941	SS100STL169	L	1	1.50	3.19	1.50	LNAL04M	60	OEW125	1.59

*NOTE: Tighten locknut to the recommended tightening torque.
Collet chuck technical section, see page K74.
Supplied with locknut.
Locknut wrench must be ordered separately.
DA standard straight-bore collets, see page I63.*

Straight Shank Tools

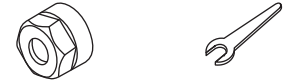
- Grip 1:1.
- Industry standard Erickson™ double-angle collet system.
- Small outside diameter clearance is ideal for use on machining centers, close center-distance, and fixture issues.
- Use for through hole tapping.
- Key drive.
- Right- or left-hand tapping capability.
- Alternate springs available to adjust tension pressure to control thread quality in a variety of workpiece conditions.
- Positive-drive collets prevent tap slippage.
- Economical to use.



DA J, K, and L collet series	mm		Collet Capacity inch			
	min	max	min	max	min	max
J	M1	M12	#0	1/2	1/16P	—
K	M1	M16	#0	5/8	1/16P	1/8P
L	M5	M24	#0	7/8	1/16P	1/2P

ERICKSON

■ DA J, K, and L Tap T&C-SS • Inch



order number	catalog number	collet series	D	D11	L	LS	L9	tension	compression	WF	locknut	ft. lbs.	wrench	lbs
1017581	SS075TCJ731	J	3/4	.85	7.31	5.44	1.50	.56	.19	.562	LNA204M	40	OEW075	.72
1017748	SS100TCK719	K	1	1.06	7.19	5.44	—	.56	.19	.750	LNAK04M	45	OEW094	1.23
1017580	SS100TCL769	L	1	1.50	7.69	3.75	—	.56	.19	1.125	LNAL04M	60	OEW125	2.06

NOTE: Do not overtighten locknut; use torque recommendations above.
 Collet chuck technical section, see page K74.
 Supplied with locknut.
 Locknut wrench must be ordered separately.
 DA standard straight-bore collets, see page I63.

■ Alternate Tension Adjustment Springs for Tension and Compression Chucks

tap chuck	standard spring	alternate spring	preload (lb/in ²)
SS075TCJ731	CS0563041156PKG	—	2.37
—	—	heavier CS054001150PKG	3.50
SS100TCK719	CS0720067125PKG	—	6.75
—	—	lightest CS0563041156PKG	2.37
—	—	lightest CS0600049125PKG	3.25
—	—	heavier CS0600055150PKG	7.50
SS100TCL769	CS0600072150PKG	heaviest CS0600072150PKG	18.00
—	—	—	18.00
—	—	light CS0600055150 PKG	7.50

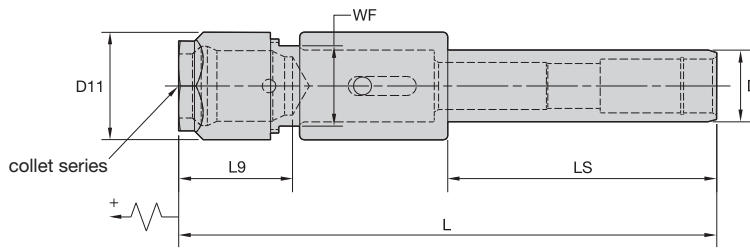
NOTE: There are two springs in a package.

Straight Shank Tools

DA J, K, and L Tap Series Double-Angle Collet Chucks, Tension Only



- Grip 1:1.
- Industry standard Erickson™ double-angle collet system.
- Small outside diameter clearance is ideal for use with machining centers, close center-distance, and fixture issues.
- Use for through hole tapping.
- Solid hard start ensures tap will start at same point every time, regardless if it is sharp or dull.
- Key drive.
- Right- or left-hand tapping capability.
- Alternate springs available to adjust tension pressure to control thread quality in a variety of workpiece conditions.
- Positive-drive collets prevent tap slippage.
- Economical to use.



DA J, K, and L collet series	mm		Collet Capacity			
	min	max	inch		min	max
J	M1	M12	#0	1/2	1/16P	—
K	M1	M16	#0	5/8	1/16P	1/8P
L	M5	M24	#0	7/8	1/16P	1/2P

Straight Shank Tools

ERICKSON™

■ DA J, K, and L Tap Tension Only-SS • Inch



order number	catalog number	collet series	D	D11	L	LS	L9	tension	WF	locknut	ft. lbs.	wrench	lbs
1017627	SS075TOJ712	J	3/4	.85	7.13	5.44	1.50	.50	.562	LNA204M	40	OEW075	.72
1017629	SS100TOK700	K	1	1.06	7.00	5.44	1.47	.75	.750	LNAK04M	45	OEW094	1.14
1017631	SS100TOL750	L	1	1.50	7.50	3.75	1.59	.75	1.125	LNAL04M	60	OEW125	2.08

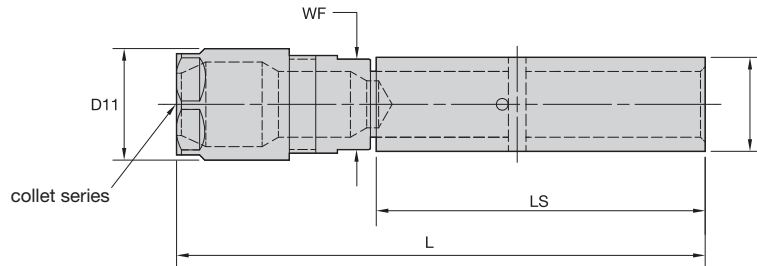
NOTE: Do not overtighten locknut; use torque recommendations above.
 Collet chuck technical section, see page K74.
 Supplied with locknut.
 Locknut wrench must be ordered separately.
 DA standard straight-bore collets, see page I63.

■ Alternate Tension Adjustment Springs for Tension-Only Chucks

tap chuck	standard spring	alternate spring	preload (lb/in ²)
SS075TOJ712	CS0563041156PKG	—	2.37
—	—	heavier CS0540041150 PKG	3.50
SS100TOK700	CS0600055150PKG	—	7.50
—	—	lighter CS0563041156 PKG	2.37
SS100TOL750	CS0600049125PKG	—	3.25
—	—	heavier CS0600055150 PKG	7.50

NOTE: There are two springs in a package.

- Grip 1:1.
- Industry standard Erickson™ double-angle collet system.
- Ideal for machining centers.
- It provides 0,10mm (.004") movement in all directions to compensate for angular and parallel misalignments.
- Minimum outside diameter and overhang provide maximum tool clearance.



DA collet series	Collet Capacity			
	mm		inch	
	min	max	min	max
DA300	0,2	6	1/64	1/4
DA200	0,2	10	1/64	25/64
DA100	1,8	14	1/64	9/16
DA180	2,2	20	1/64	3/4

ERICKSON

■ DA 08 DP F-SS IN



order number	catalog number	collet series	D	D11	L	LS	WF	locknut	wrench	ft. lbs.	lbs
1015905	SS050DP308403	DA300	1/2	.69	4.03	2.50	.500	NPA338	OEW062	20	.22
1015906	SS075DP308403	DA300	3/4	.69	4.03	2.50	.500	NPA338	OEW062	20	.50
1015980	SS075DP208448	DA200	3/4	.94	4.50	3.00	.625	NPA238	OEW088	40	.56
1015949	SS100DP308403	DA300	1	.69	4.03	2.50	.500	NPA338	OEW062	20	.89
1015981	SS100DP208448	DA200	1	.94	4.50	3.00	.625	NPA238	OEW088	40	.99
1015979	SS100DP108562	DA100	1	1.19	5.63	3.50	.875	NPA139	OEW088	55	1.24
1015944	SS125DP188696	DA180	1-1/4	1.50	6.97	4.50	1.125	LNA138	OEW138	75	2.41

NOTE: Do not overtighten locknut; use torque recommendations above.
 Using two wrenches is recommended to prevent premature wear on the floating mechanism. Wrenches must be ordered separately.
 Collet chuck technical section, see page K74.
 Supplied with locknut.
 DA standard straight-bore collets, see page I63.

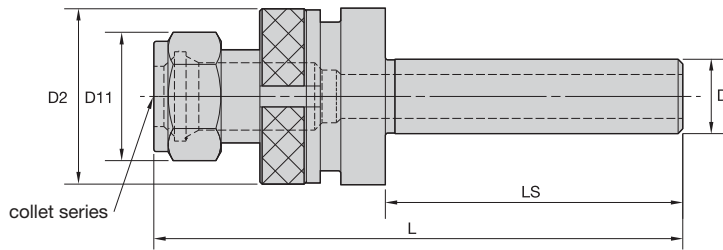
Straight Shank Tools

Straight Shank Tools

DA 08 FF Series Double-Angle Collet Chucks, Fully Floating Holders



- Grip 1:1.
- Industry standard Erickson™ double-angle collet system.
- Recommended only for stationary applications (lathe).
- Toolholder provides 0,25mm (.010") movement in all directions to compensate for angular and parallel misalignments.
- Hollow design enables coolant through the tool and short projection lengths.
- Adjusting nut varies spring tension to compensate for cutter weight.



DA 08 collet series	Collet Capacity			
	mm		inch	
	min	max	min	max
DA180	2,2	20	1/64	3/4

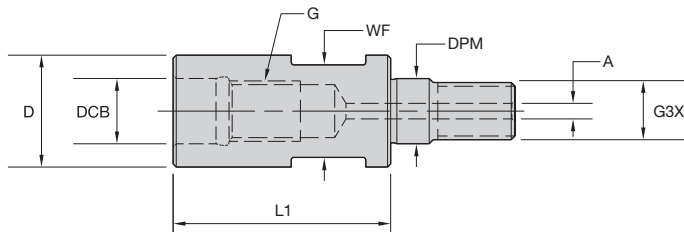
ERICKSON™

■ DA 08 FF-SS IN



order number	catalog number	collet series	D	D11	D2	L	LS	locknut	wrench	wrench	ft. lbs.	lbs
1015975	SS075FC188688	DA180	3/4	1.73	2.38	6.88	4.00	NPA188	OEW150	HSW58M	75	.86
1015982	SS100FC188688	DA180	1	1.73	2.38	6.88	4.00	NPA188	OEW150	HSW58M	75	1.52
1015910	SS125FC188888	DA180	1 1/4	1.73	2.38	8.88	6.00	NPA188	OEW150	HSW58M	75	4.08
1015952	SS150FC188688	DA180	1 1/2	1.73	2.38	6.88	4.00	NPA188	OEW150	HSW58M	75	3.44
1015947	SS150FC188888	DA180	1 1/2	1.73	2.38	8.88	6.00	NPA188	OEW150	HSW58M	75	4.44
1015976	SS175FC188888	DA180	1 3/4	1.73	2.38	8.88	6.00	NPA188	OEW150	HSW58M	75	6.04
1013502	SS200FC188888	DA180	2	1.73	2.38	8.88	6.00	NPA188	OEW150	HSW58M	75	—

NOTE: Do not overtighten locknut; use torque recommendations above.
 Locknut and adjusting nut wrenches must be ordered separately.
 Collet chuck technical section, see page K74.
 Supplied with locknut.
 DA standard straight-bore collets, see page I63.



ERICKSON

■ ST Ext-ST

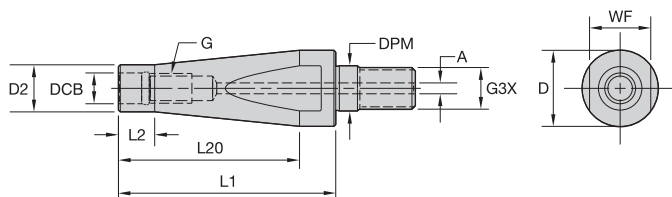
order number	catalog number	DCB	G	DPM	G3X	D	A	L1	WF	kg
4074158	M06MST06025M	6,5	M6	6,5	M6	9,8	2	25	7	0,01
4074159	M08MST08030M	8,5	M8	8,5	M8	13,0	2	30	10	0,03
4074160	M10MST10035M	10,5	M10	10,5	M10	18,0	3	35	15	0,06
4074161	M12MST12040M	12,5	M12	12,5	M12	21,0	3	40	17	0,10
4074162	M16MST16040M	17,0	M16	17,0	M16	29,0	4	40	22	0,18



Straight Shank Tools

Straight Shank Tools

Screw-On Adapters for Modular Milling Cutters, Reducers



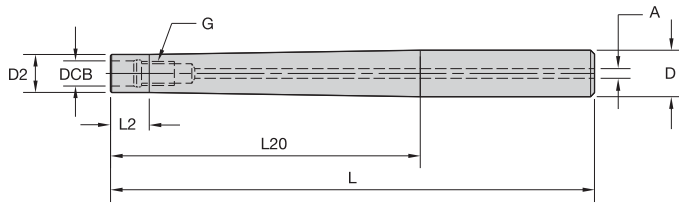
ERICKSON™

■ ST Red-ST

order number	catalog number	DCB	G	DPM	G3X	D	D2	A	L1	L2	L20	WF
4077826	M08MST06025M	6,5	M6	8,5	M8	13	10	2,0	25	10	15	10
4077815	M10MST08030M	8,5	M8	10,5	M10	18	13	2,5	30	10	20	15
4077822	M12MST06080M	6,5	M6	12,5	M12	21	10	3,0	80	10	70	17
4077818	M12MST06040M	6,5	M6	12,5	M12	21	10	3,0	40	10	30	17
4077820	M12MST10035M	10,5	M10	12,5	M12	21	18	3,0	35	10	25	17
4077816	M12MST06060M	6,5	M6	12,5	M12	21	10	3,0	60	10	50	17
4077817	M12MST08080M	8,5	M8	12,5	M12	21	13	3,0	80	10	70	17
4077819	M12MST08060M	8,5	M8	12,5	M12	21	13	3,0	60	10	50	17
4077821	M12MST08040M	8,5	M8	12,5	M12	21	13	3,0	40	10	30	17
4077825	M16MST10060M	10,5	M10	17,0	M16	29	18	4,0	60	10	50	22
4074194	M16MST12040M	12,5	M12	17,0	M16	29	21	4,0	35	10	25	22
4074193	M16MST08060M	8,5	M8	17,0	M16	29	13	4,0	60	10	50	22
4077824	M16MST10080M	10,5	M10	17,0	M16	29	18	4,0	80	10	70	22
4077823	M16MST08080M	8,5	M8	17,0	M16	29	13	4,0	80	10	70	22

Straight Shank Tools

- Heavy metal for strength.

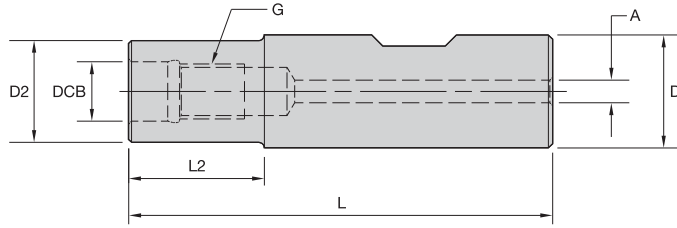


ERICKSON

■ ST Est-SS MM

order number	catalog number	DCB	G	D	D2	A	L	L2	L20
4160427	SS120STCHM06085M	6,5	M6	12	10	2,5	85	10	40
4160428	SS120STCHM06105M	6,5	M6	12	10	2,5	105	10	60
4160430	SS120STCHM06125M	6,5	M6	12	10	2,5	125	10	80
4160431	SS160STCHM08088M	8,5	M8	16	13	3,0	88	10	40
4160473	SS160STCHM08128M	8,5	M8	16	13	3,0	128	10	80
4160432	SS160STCHM08108M	8,5	M8	16	13	3,0	108	10	60
4160474	SS160STCHM08148M	8,5	M8	16	13	3,0	148	10	100
4160475	SS160STCHM08168M	8,5	M8	16	13	3,0	168	10	120
4160480	SS200STCHM10170M	10,5	M10	20	18	3,5	170	10	130
4160479	SS200STCHM10150M	10,5	M10	20	18	3,5	150	10	100
4160478	SS200STCHM10130M	10,5	M10	20	18	3,5	130	10	80
4160477	SS200STCHM10110M	10,5	M10	20	18	3,5	110	10	60
4160476	SS200STCHM10090M	10,5	M10	20	18	3,5	90	10	40

Straight Shank Tools

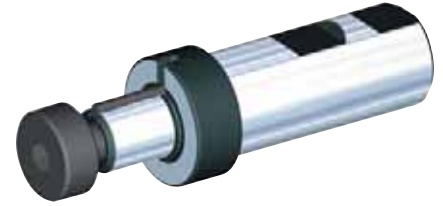
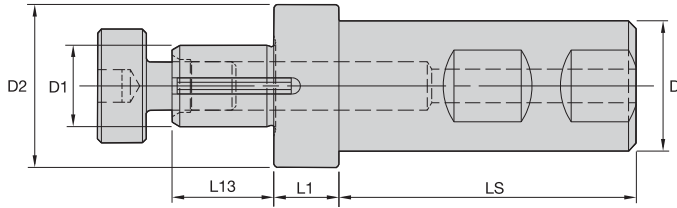


ERICKSON™

■ ST Est-WN MM

order number	catalog number	DCB	G	D	D2	A	L	L2
4074129	M06WST10060M	6,5	M6	10	10	2	60	19
4074131	M08WST16073M	8,5	M8	16	13	4	73	24
4074132	M10WST20080M	10,5	M10	20	18	4	75	24
4074153	M12WST25086M	12,5	M12	25	21	5	86	29
4074154	M16WST32095M	17,0	M16	32	29	6	95	34

Straight Shank Tools



ERICKSON

■ SA-SS IN



order number	catalog number	D	D1	D2	L1	LS	L13	lock screw	wrench size lock screw	drive key	spacing collar	lbs
1288235	SS100SA062050	1	5/8	1.25	.50	2.28	.78	KLS07	1/4	DWG SDK062088	—	.74
1288264	SS125SA100075	1 1/4	1	1.61	.75	2.28	.94	KLS10	5/16	DWG SDK100106	—	1.46
1015362	SS125SA125075	1 1/4	1 1/4	1.86	.75	2.28	1.09	KLS12	5/16	DWG SDK125119	QNB-80617B	2.05
1015363	SS150SA150100	1 1/2	1 1/2	2.11	1.00	2.69	1.70	KLS15	3/8	DWG SDK150175	—	3.28
1015384	SS200SA200100	2	2	2.75	1.00	3.25	1.70	KLS20	9/16	SDK200169	—	6.64

NOTE: Do not overtighten lock screw.
 Item 1288264 is supplied with .156" spacer.
 Item 1015362 is supplied with .250" spacer.
 Supplied with lock screw and drive key.
 Lock screw wrench not included.

Straight Shank Tools